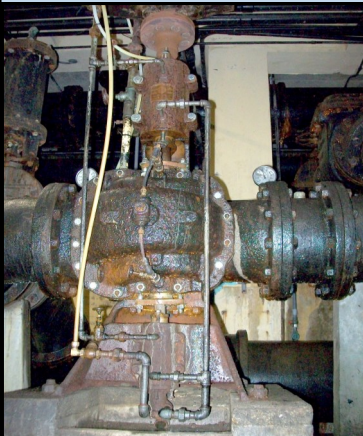


Kennedy Provides Water Treatment Plant Improved Efficiency



EXISTING PUMP HAD A MAZE OF LINES AND SHAFTING

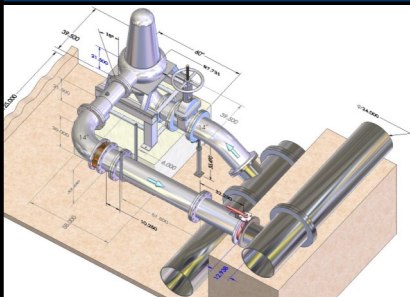
PROBLEM: Subject Water Treatment Plant suffered from a repair estimate over \$40,000.00 due to badly worn impeller and pump casing on their vertical split case pump. In addition to the raw repair expenses, this pump also cost the WTP personnel time and money due to extraordinarily high maintenance, such as greasing

shaft bearings, adjusting packing, maintaining the flush system, and adding oil to a tank with chronic leaks. The customer was interested in a more efficient system and, in July of 2011, sought the assistance of Kennedy Industries in solving their problem.



THE NEW FLYGT DRY PIT SUBMERSIBLE PUMP AND J&S GATE VALVE INSTALLED WITH NO PIPING MAZE AND NO SHAFTING

ENTIRE ASSEMBLY MODEL FOR COMPONENT

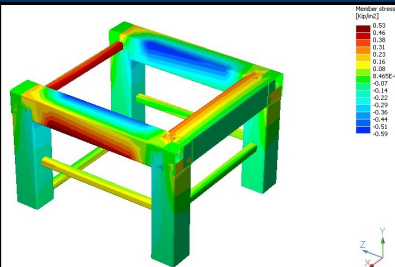


SOLUTION: Kennedy Industries worked with the customer to evaluate the application and proposed a new Flygt Dry Pit Submersible Pump and a J&S Gate Valve for suction isolation. Kennedy used precision laser measurements of the existing pump and piping to produce a solid model assembly design, to ensure proper fitting and alignment of the new components. Kennedy also designed and manufactured a custom pump base for the Flygt Dry Pit submersible to be easily retrofitted into their existing space. The

Key Product Features:

- No seal leak mess to clean up
- "Plug and Play" No drive shaft or packing
- Improved safety for operators
- Zero maintenance hours due to grease or oil changes

PUMP BASE ANALYSIS (BASE DESIGNED AND MANUFACTURED BY KENNEDY INDUSTRIES)



design and installation guidance provided by Kennedy allowed the customer to do the installation in house. The Water Treatment Plant was thrilled to have a custom system that runs more efficiently as well as saves them time and money.