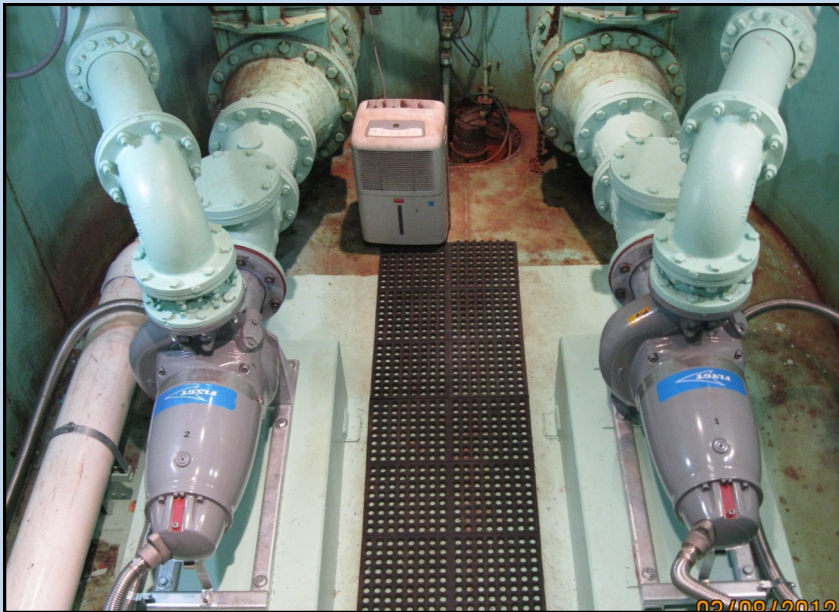


Flygt Chopper Pumps Eliminate Clogging in Flat Rock, MI



Flygt Chopper Pump

Features:

- Energy Savings over Conventional Chopper Designs
- Designed for Continuous Operation
- Closed Loop Cooling System
- No Oil to Maintain
- Inverter Duty Motor
- Permanently Greased Bearings, Upper & Lower
- Truly Non-Clog Design
- 18 Month Warranty

PROBLEM: The City of Flat Rock, MI had big clogging and maintenance issues with their pumps clogging at their Gibraltar Road Lift Station for years. The partially plugged pumps ran inefficiently, using excessive energy and when the pumps would stop working all together, City personnel would have to pull them and remove debris. This resulted in excess overtime, personnel safety risks, and expensive repair costs. The seal water system also required a large compressor system & tank in the control building to flush the old pump's mechanical seals, which added to their maintenance costs. Flat Rock needed a solution to their pump clogging and seal water problems and fast. They planned to implement their solution into an upgrade & repair project that was sent out to contractors for competitive bid.



Existing compressor system & tank for flushing old pump seals, eliminated with Flygt dry pit Pumps

SOLUTION: Working with Kennedy Industries, the City and their consulting Engineer, specified horizontally mounted Flygt FZ-3153 Chopper Pumps for their lift station upgrade and repair project. In addition to the new Chopper Pumps, they also specified a short length of new suction and discharge piping, including reducers and check valves in the lift station. The Flygt Chopper Pumps were installed by the contractor on the existing pump bases in the dry well and configured horizontally.

The selection of the Flygt Chopper Pumps not only eliminated issues with pump clogging but also eliminated the seal water issues. The Flygt Chopper Pumps utilize a Mono Propylene glycol coolant which is circulated around the stator to transfer heat and also lubricates and cools the lower and upper mechanical seal faces. This superior technology does not require the use of external utilities to flush the seal. The Flygt Chopper Pumps also came equipped with seal failure and high temperature detection insuring the customer is alerted upon a fault condition. The installation of the Flygt Chopper pumps at the Gibraltar Rd Lift Station will provide clog-free service in addition to reducing the troublesome maintenance related to a large seal water flushing system.