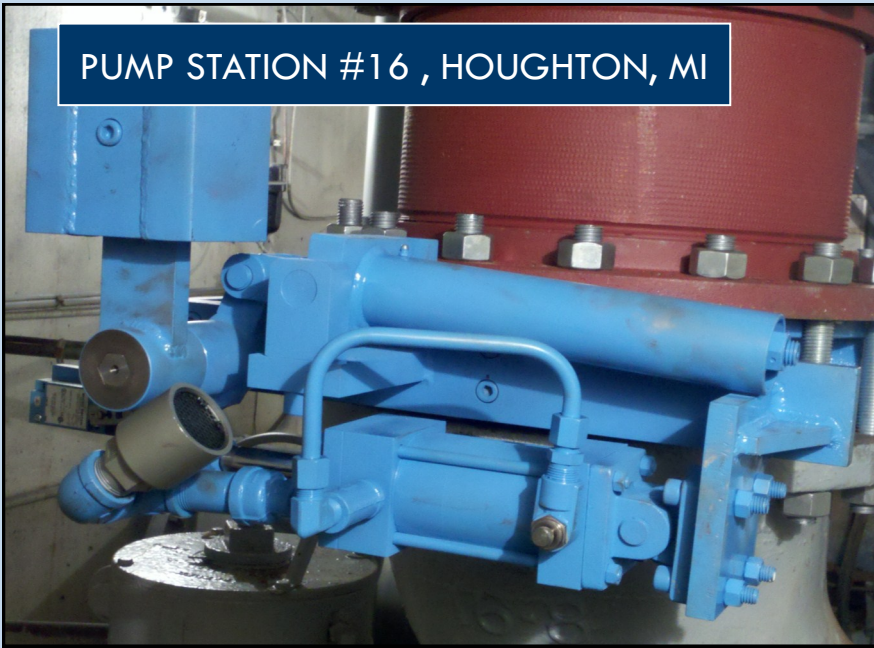


## RitePro Gets the Job Done at Houghton, MI Pump Station

PUMP STATION #16 , HOUGHTON, MI



### Key Product Features:

- Carbon Steel Wafer Body
- Stainless Steel Disc & Trim
- Rugged Shaft with Hex Connection
- Options including Oil Cushioned Cylinder, Spring Assist, Position Switches, & More!

**PROBLEM:** Houghton, MI experienced repeated problems with their pneumatic pump check valves failing at their sewage pump station which necessitated yearly valve replacement. The prime causes of the failures were speed of operation, including rate of closure, disc flutter, and debris. When considering our options to correct this problem, several critical conditions needed to be addressed. Due to the high cost of the header reconfiguration, the proposed solution needed to fit into the existing valve laying length space. Secondly, the new valve would need to be rugged enough to handle normal on-off operation as well as power failure/emergency close in which heavy reverse flow may occur. Standard shafts with a keyway would not suffice. Lastly, the addition of a full close position switch would also be necessary.

**SOLUTION:** The RitePro Wafer Swing Check Valve stood out as a solution because of its many outstanding features as well as compatibility with the application requirements. RitePro utilizes a large disc shaft as well as a disc-to-shaft hex connection backed by a heavy roller bearing which would allow it to handle emergency operation. The RitePro Wafer Swing Check Valve also offers an adjustable oil cushion cylinder for controlled closure and a spring assist opening allowing for smooth open-close operation without slamming. Lastly, the RitePro valve was fitted with a full close position switch for resetting the control system.

At testing, the RitePro Wafer Swing Check Valve was completely successful in all areas of operation, including emergency close at full pump speed and at all speed ranges. Upon project completion, the owner, engineer and contractor were completely satisfied with the change to the RitePro check valves at this station.